



Kenwood GPS BlackBox:

Description & Usage

The SatGuide GPS Navigation Box integrates with NAV enabled existing car video entertainment system in vehicles to convert them into Navigation when needed.

How to use?

In your vehicle has a Double-din device, you can add navigation capabilities to those devices without the need for another screen in your vehicle. The process is simple and can be done by any car mechanic. Once SatGuide is installed, navigate across hundreds of cities and lakhs of destinations anywhere in India. Never Get Lost with SatGuide.

SatGuide helps you look up and route directly to specific addresses or point of interest such as restaurants, hotels, gas stations, retails shops or ATMs while viewing your exact location on detailed street maps. It even announces the name of exits and streets through your car's speakers so you never have to take your eyes off the road. Map graphics are shown on your system's integrated video display. To know more about SatGuide maps & database, log on to www.satguide.in.

Specifications:

System parameters	
Main frequency	400MHZ
Main chip model number	SAMSUNG S3C2440A-40
Memory/Store space	64MB/64MB(upto 4GB)
Navigation software store	SD card
Operation system	WINCE5.0 NET
Support audio type	MP3/PCM/WMA
Support video type	ASF/AVI/WMV/DIVX
Video decodes function	QVGA >25 frame/S
Software compilation type	ARMV4I

Base Parameters	
Video output type	CVBS / Y/C / YPbPr, analogue RGB
Video output voltage	1.0Vpp/75 Ohm
Resolution	320*240/400*234/480*234/VGA (through resistor select)
Audio output	Stereo CD quality
Audio power	Stereo 0.25W/Channel
Weight/size	100g / 70(H)*102(W)*26(D) mm
Operation temperature	-30 to +80 Degrees
Store temperature	-40 to +100 Degrees




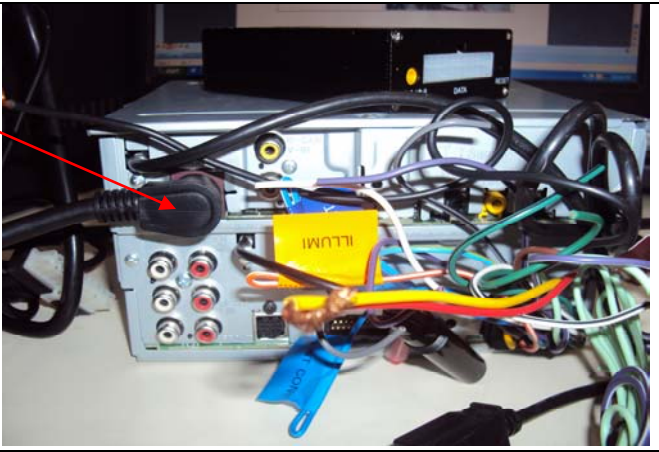

Operation humidity	45% to 80%
Store humidity	30% to 90%
Operation voltage	DC 5V or 12V
Average power consume	3W
Standby power consume	<50mW

GPS Parameters:	
Chip set	SiRF Star III
Frequency	1.575GHZ
C/A CODE	1.023 MHZ chip rate
Channel number	20 channels
Tracking sense degree	-159dBm
Position accuracy	10m, 2D RMS 5m, 2D RMS, WAAS Enable
Velocity	0.1m/s
Data renewal rate	1HZ
Re-catching time	Average 0.1s
start time Hot/Warm/Cold	Average 1s /38s / 42s
The biggest fixed height	18,000m
The biggest velocity	515m/s
Acceleration	< 4g
GPS antenna type	External power source porcelain antenna
Antenna gain	27dB
Antenna voltage	3.3V±5%
Antenna current	15mA
Antenna interface type	90 or 180 degree clubfoot SMA pin

Software Request:

- Wince. net 5.0 CORE
- GPS COM2, Baud rate 9600
- 320*240 CVBS, 400*234, 6.5" RGB, 480*234 6.2" or 7 inch panel.

Power Connections between GPS black box and Kenwood 5032 2Din system

<p>1) GPS box connection: Attach Red(ACC),green (B) cables to +12V and Black(ground) to -12V Battery</p>	
<p>2) Connect the RGB & Data cable to GPS blackbox</p>	
<p>3) Way of the SD Card inserting in Blackbox</p> <p>Note: SD Card is already inserted with SatGuide application</p>	

4) **GPS Antenna** connection with GPS blackbox(GPS antenna should be open to sky)



6) Connect **RGB cable** other end to Kenwood 2Din system

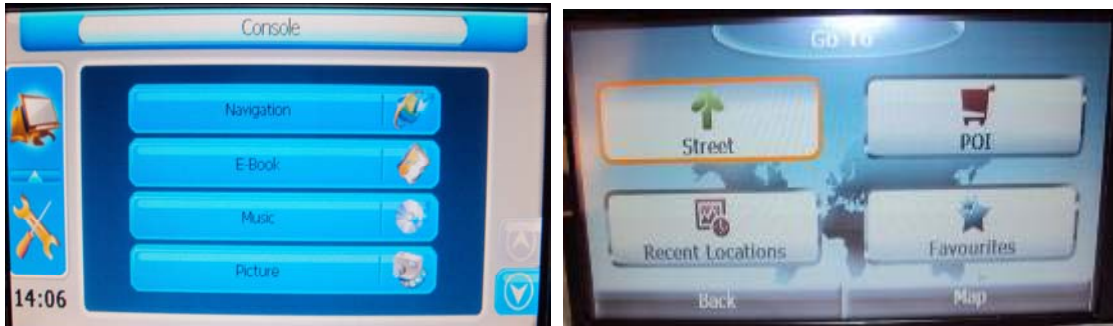


How to Launch the SatGuide application in Kenwood 2Din system

- 1) Switch on the Kenwood 2Din system, from the left panel press on **“Nav”** button as shown below to launch SatGuide Application in the device.



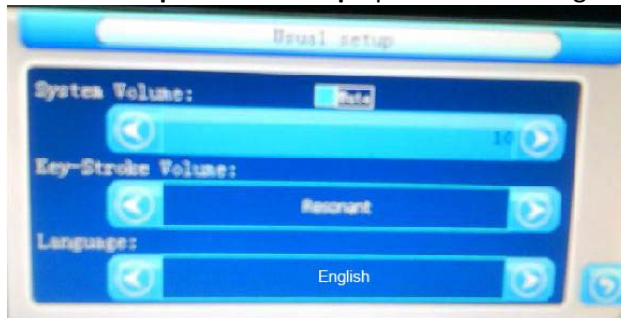
- 2) After Pressing the “Nav” button then SatGuide application will launch in the device as shown below.



Note: when ever if **SatGuide application** hangs then click Reset button of GPS box after resetting GPS box it will shown Chinese language and default booting path.

- 1) To select English language follow below step.

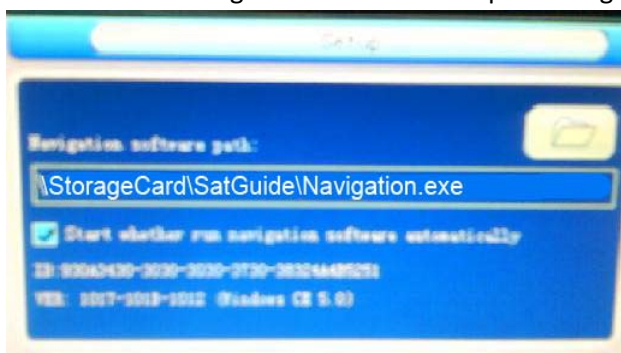
Click on **Setup-->Usual Setup** option there change the language as English.



- 2) To select SatGuide application booting path follow below step.

→ Tap **Navigate Setup** option and Set the below path from SD Card
\Storage card\SatGuide\Navigation.exe

→ **Go back to** Navigation window and tap on Navigation to launch SatGuide application





When GPS black box doesn't work:

- 1) Reset the GPS Blackbox by tapping Reset button.
- 2) After inserting SD Card in the Blackbox, then switch on the Kenwood device and blackbox.
- 3) To detect SaGuide application from GPS blackbox, the connection is must between GPS blackbox and Kenwood device.
- 4) Just check the GPS blackbox that the power is coming or not and check the cables properly Connected or not.
- 5) Check the SD Card it is lock or unlock while inserting in GPS blackbox.
- 6) Check the SD Card it is properly inserted or not in the blackbox.